



This webcast is being recorded. Your participation provides consent to the recording.

DER-VET Task Force

ESIC Working Group 1: Grid Services and Analysis

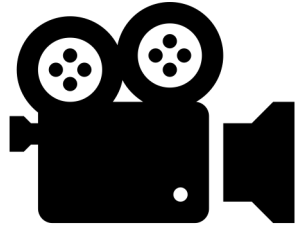
Miles Evans | EPRI

Andrew Etringer | EPRI

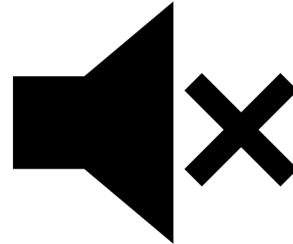
March 3, 2022



Webcast Reminders



This webcast is being recorded. **Your participation provides consent to the recording.**



Please mute your phones when you are not speaking. To un-mute, press *6 or push the un-mute icon in WebEx.



Abide by Antitrust Guidelines



Chat to “Everyone” for maximum interaction



The slides and recordings will be posted to www.der-vet.com/esictf/



This webcast is being recorded. Your participation provides consent to the recording.

DER-VET Task Force

ESIC Working Group 1: Grid Services and Analysis

Miles Evans | EPRI

Andrew Etringer | EPRI

March 3, 2022



Agenda:

- DER-VET Software Release Schedule
- DER-VET Feature Change Highlights
- Electricity Dump for Thermal Loads
- Polling & Task Force 2022 Results



DER-VET Software Release Schedule

DER-VET New Release v1.2 Target Date: March 22nd

- Bug Fixes (*Python backend, GUI*)
- Improved fuel cost methods (*Python backend, GUI*)
- Support for Python 3.8
- New Thermal Load Technologies (*Python backend only*)
- User Experience Improvements (*GUI*)

der-vet.com

Thank you for reporting bugs to us.

Please do send any new bug reports to us and we will address them.



DER-VET Feature Change Highlights



Import Existing Project

Import an existing project by clicking the "Select Project" button below and selecting the folder from your computer that contains the project you wish to import. Note that this folder must contain the DER-VET `project.json` file.

Select Project

/Users/paet001/Downloads/test/CAISO Pre-Defined Case

Import

Import Error: This project is incompatible with the current GUI release.

To check whether your project is compatible, open the project.json file: it must contain a schemaVersion equal to 1.0.0.

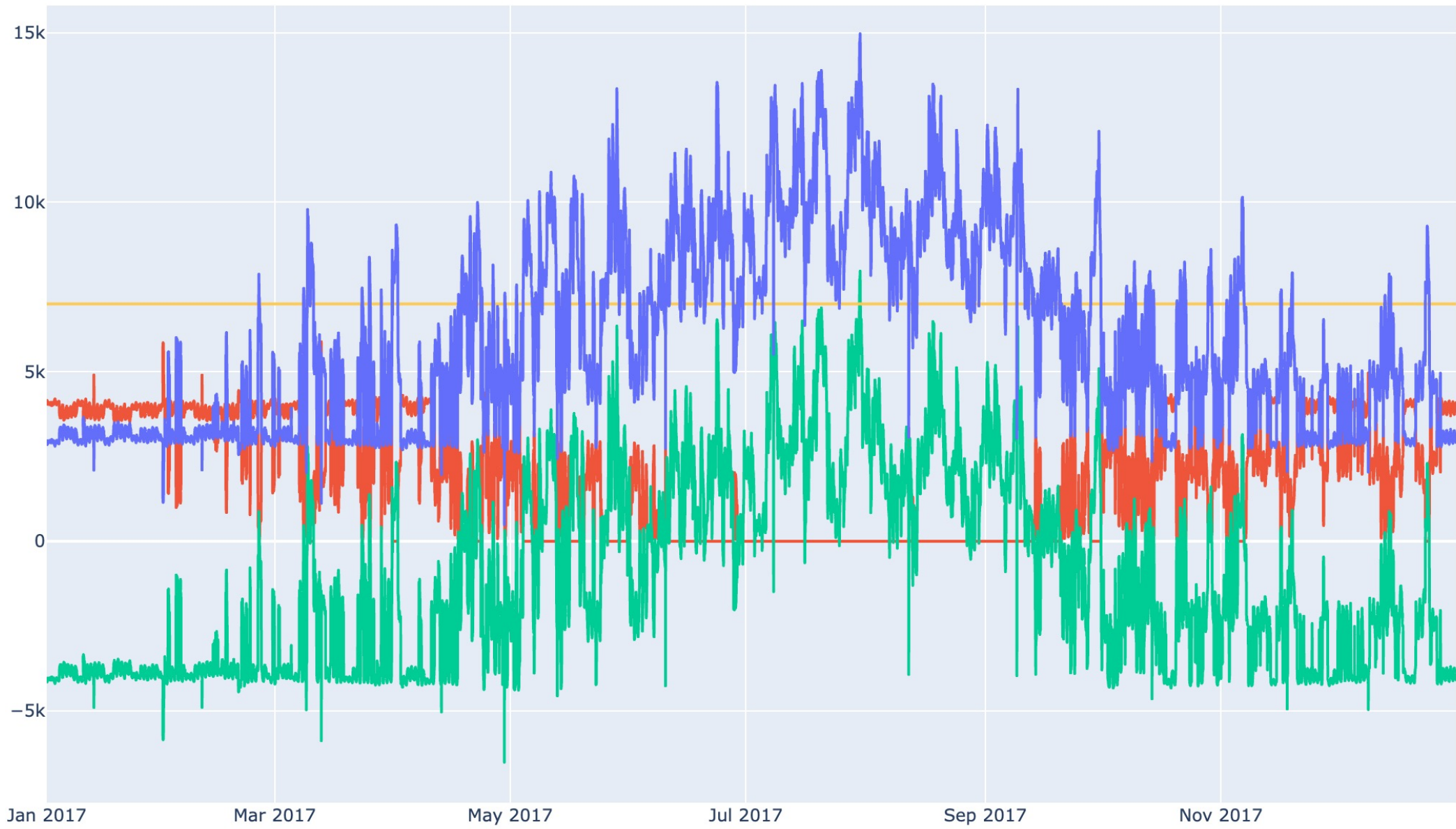
To migrate a project exported with a previous version to the most current, see [link to script](#)



Electricity Dump for Thermal Loads

New Feature: activate a Load Dump

- with an active Load Dump and with the *Scenario*: *apply_interconnection_constraints* parameter set to True, the *max_export* constraint is removed from the optimization problem. Then Load Dump is determined as a post-optimization calculation.
- Load Dump will not be an optimization variable.
- Load Dump can be used to avoid no-export constraint infeasibilities.

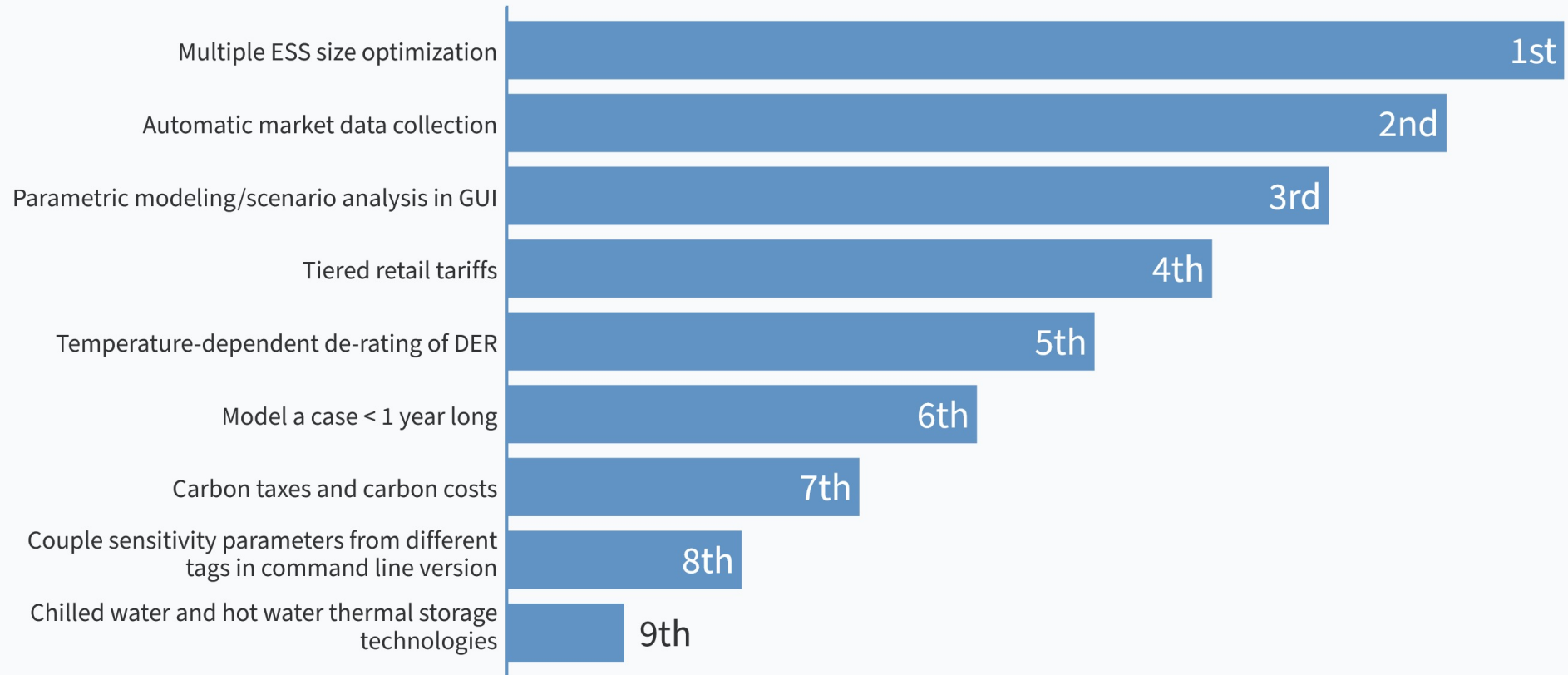


- variable
- Aggregated State of E
 - BOILER: boiler 1 Hot
 - BOILER: boiler 1 Stea
 - CHILLER: chiller 1 Co
 - CHP: chp gen 1 Electr
 - CHP: chp gen 1 Energ
 - CHP: chp gen 1 Hot W
 - CHP: chp gen 1 On (y
 - CHP: chp gen 1 Stean
 - Energy Price (\$/kWh)
 - LOAD: Site Load Orig
 - Load Dump (kW)
 - Net Load (kW)
 - Net Thermal Cooling L
 - Net Thermal Hot Water
 - Net Thermal Steam L
 - THERMAL LOAD: Site
 - THERMAL LOAD: Site
 - THERMAL LOAD: Site
 - Total Generation (kW)
 - Total Load (kW)
 - Total Original Load (k
 - Total Storage Power (k
 - Total Thermal Cooling
 - Total Thermal Cooling
 - Total Thermal Hot Water
 - Total Thermal Hot Water
 - Total Thermal Steam



Polling & Task Force 2022 Results

Please Rank the Following DER-VET Development Items by Their Importance to You





**Next Meeting April 7, 2022
11 AM Pacific Time**

A blue-tinted photograph of four people, two men and two women, standing in a row. They are dressed in professional attire, including lab coats and a hard hat. The text 'Together...Shaping the Future of Energy™' is overlaid in white on the image.

Together...Shaping the Future of Energy™